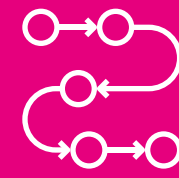


CONSTRUCTION & DEVELOPMENT



23% INCREASE IN BUSINESS BASE SINCE 2019



STRONG FUTURE DEVELOPMENT PIPELINE



2,000 BUSINESSES IN THE SECTOR



12,000+ JOBS



ONE OF THE FASTEST GROWING CITIES IN THE UK



Photo courtesy of Middlewood Locks

Salford has been at the centre of a construction and development boom which has seen unprecedented levels of residential and commercial development.

Since 2017, there has been £386m of public investment and £3.11bn of private investment in the city, including the creation of 20,000 new homes. The development pipeline is exceptional, with Salford set to deliver 67,000 new homes and 1m sqm of commercial floorspace over the next 20 years.

Salford has experienced significant economic growth alongside the major growth in its population and is one of the fastest growing cities in the UK. Its local construction sector has flourished in this context and the city provides a fantastic destination for construction firms that want to be close to development opportunities.

There are almost 2,000 businesses in the sector providing over 12,000 jobs and the business base has grown by over 23% since 2019. Salford has specialised and growing sub sectors particularly in commercial real estate, closely linked to the development of the city.

The city has also pioneered work to secure job opportunities for local residents through the Build Salford initiative. The city has a strong talent pipeline in place with skills provision delivered through Salford City College, the University of Salford and other partners guided by a five-year Salford Employment and Skills Strategy, which aims to help better connect local people to the growth that is taking place in the city and narrow inequalities.

£386M OF PUBLIC INVESTMENT SINCE 2017

£3.11BN OF PRIVATE INVESTMENT IN THE CITY

Muse

Muse is a nationwide placemaker, with 40 years of experience creating mixed-use communities across the UK.

Their track record of leading complex, mixed-use regeneration gives them the experience to deliver successful places, with the emphasis on sustainability, community and quality.

Part of Morgan Sindall Group, Muse combines local insight with the resources and capabilities of a nationwide organisation, with regional businesses based in Salford, Leeds, London and Birmingham. The business has 20 projects under construction across a variety of sectors, totalling £1.4bn gross development value, with a forward development pipeline standing at £1.8bn.

Muse's ECF partnership with Homes England and Legal & General has led the regeneration of Salford Central, transforming a vast 50-acre space into a community of world-class workspaces for businesses, including the award-winning, net zero in operation workplace, Eden, and over 1,000 new homes. It is now working with Salford City Council and the University of Salford on The Crescent Salford Masterplan, set to create thousands of new homes and opportunities for businesses, jobs and education.

Muse is working with partners, creating successful places across the North West including Stockport, Oldham, St Helens, Manchester city centre, Cheshire, Blackpool and Prestwich, winning multiple awards including both the Insider North West Residential and Commercial Developer of the Year in 2024.

Riverside House, Irwell St, Salford, M3 5EN

museplaces.com



**£185.3 MILLION
GROSS TURNOVER**



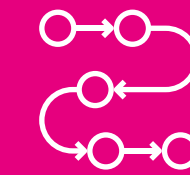
**GREENHAUS HAS CREATED
96 AFFORDABLE, SUSTAINABLE
HOMES FOR THE CITY**



**GROWING
WORKFORCE**



**104
EMPLOYEES**



**£1.8 BILLION
DEVELOPMENT
PIPELINE**

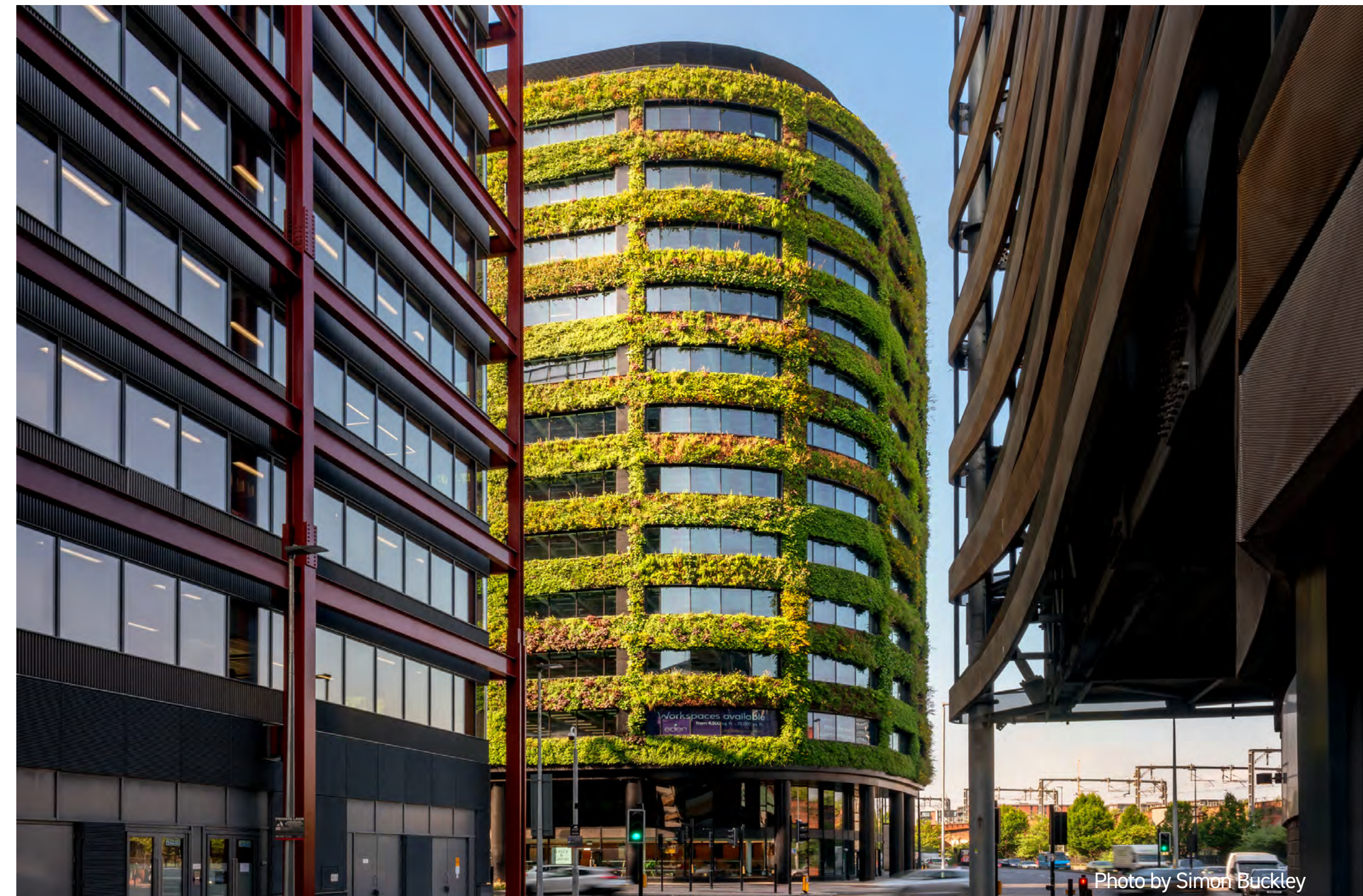


Photo by Simon Buckley

Morgan Sindall

Morgan Sindall Construction is a national main contractor with a £967 million turnover.

Its decentralised structure sees its North West operations managed from a regional business unit in Salford, employing around 160 people and generating £130 million in revenue.

It is part of Morgan Sindall Group plc, a collection of specialist businesses delivering construction and regeneration projects across the UK. The Group, which also includes Salford-based developer Muse, has over 7,000 employees and in 2023 achieved over £4 billion in revenue.

In Salford, Morgan Sindall has been at the heart of the city's regeneration over the past two decades. Key projects include the BUPA Headquarters at MediaCity and several developments at New Bailey for the English Cities Fund, including Slate Yard Phase 3 and Novella. The company maintains a strong industry partnership with the University of Salford, benefiting both employees and students.

Morgan Sindall is also a leader in skills and training within the Salford construction sector, exemplified by their 'Knowledge Quad' initiative. This facility, initially hosted at The University of Salford and now at the C2 development, provides a base within a live construction site for educational engagement and employment courses such as Build Salford, and a wide range of other skills and training activities. Its onsite location offers users a unique insight into a working construction environment.

Anchorage 2, Salford Quays, M50 3YW
[morgansindallconstruction.com](https://www.morgansindallconstruction.com)



GENERATED £130 MILLION IN REVENUE LOCALLY



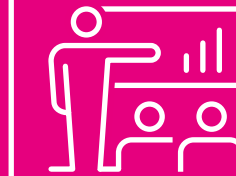
STRONG INDUSTRY PARTNERSHIP WITH UNIVERSITY OF SALFORD



NORTH WEST OPERATIONS UNIT BASED IN SALFORD



THE GROUP HAS 7K+ EMPLOYEES NATIONALLY



SECTOR LEADER IN SKILLS AND TRAINING






Photo by Mark Waugh

Contact us

For further information on investing in Salford, contact:

Business and Investment Team, Salford City Council

 0161 793 3969

 invest@salford.gov.uk

investsalford.com

For further information about Manchester's inward investment agency, contact:

MIDAS

 info@midas.org.uk

investinmanchester.com

Salford City Council

Invest Salford

 **MIDAS**
investinmanchester.com