

SALFORD SECTOR PROFILES

Salford City Council

Invest Salford



THIS IS SALFORD

One of the UK's fastest growing investment destinations

Over the next two decades Salford is forecast to experience the fastest growth in Greater Manchester, with the local economy expected to increase by over 46% with £3billion of growth.

Strategic growth locations - City Centre Salford, and The Quays and MediaCityUK, have already seen phenomenal development, whilst there are exciting plans for the Greater Manchester Western Gateway area including Port Salford, and Salford's towns.

The city's ambition is to build a more inclusive economy, creating good quality jobs for Salford's residents, working with

businesses, employers and partners to make this happen.

Salford has the locations, the infrastructure, the networks, the talent, and the support to help bring your investment ideas to life. It's a place where business can thrive.

This document puts a spotlight on Salford's most important sectors and some of the city's key businesses; it has been developed to aid investors and those wanting to know more about the city.

Contact us for any further information.



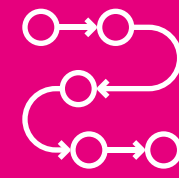
Contents

Construction & development	3
Creative & technology	6
Health, social care & innovation	9
The industrial economy	12
Low carbon & clean growth	15
The office economy	18
The visitor economy	21
Contact us	24

CONSTRUCTION & DEVELOPMENT



23% INCREASE IN BUSINESS BASE SINCE 2019



STRONG FUTURE DEVELOPMENT PIPELINE



2,000 BUSINESSES IN THE SECTOR



12,000+ JOBS



ONE OF THE FASTEST GROWING CITIES IN THE UK



Photo courtesy of Middlewood Locks

Salford has been at the centre of a construction and development boom which has seen unprecedented levels of residential and commercial development.

Since 2017, there has been £386m of public investment and £3.11bn of private investment in the city, including the creation of 20,000 new homes. The development pipeline is exceptional, with Salford set to deliver 67,000 new homes and 1m sqm of commercial floorspace over the next 20 years.

Salford has experienced significant economic growth alongside the major growth in its population and is one of the fastest growing cities in the UK. Its local construction sector has flourished in this context and the city provides a fantastic destination for construction firms that want to be close to development opportunities.

There are almost 2,000 businesses in the sector providing over 12,000 jobs and the business base has grown by over 23% since 2019. Salford has specialised and growing sub sectors particularly in commercial real estate, closely linked to the development of the city.

The city has also pioneered work to secure job opportunities for local residents through the Build Salford initiative. The city has a strong talent pipeline in place with skills provision delivered through Salford City College, the University of Salford and other partners guided by a five-year Salford Employment and Skills Strategy, which aims to help better connect local people to the growth that is taking place in the city and narrow inequalities.

£386M OF PUBLIC INVESTMENT SINCE 2017

£3.11BN OF PRIVATE INVESTMENT IN THE CITY

Muse

Muse is a nationwide placemaker, with 40 years of experience creating mixed-use communities across the UK.

Their track record of leading complex, mixed-use regeneration gives them the experience to deliver successful places, with the emphasis on sustainability, community and quality.

Part of Morgan Sindall Group, Muse combines local insight with the resources and capabilities of a nationwide organisation, with regional businesses based in Salford, Leeds, London and Birmingham. The business has 20 projects under construction across a variety of sectors, totalling £1.4bn gross development value, with a forward development pipeline standing at £1.8bn.

Muse's ECF partnership with Homes England and Legal & General has led the regeneration of Salford Central, transforming a vast 50-acre space into a community of world-class workspaces for businesses, including the award-winning, net zero in operation workplace, Eden, and over 1,000 new homes. It is now working with Salford City Council and the University of Salford on The Crescent Salford Masterplan, set to create thousands of new homes and opportunities for businesses, jobs and education.

Muse is working with partners, creating successful places across the North West including Stockport, Oldham, St Helens, Manchester city centre, Cheshire, Blackpool and Prestwich, winning multiple awards including both the Insider North West Residential and Commercial Developer of the Year in 2024.

Riverside House, Irwell St, Salford, M3 5EN

museplaces.com



£185.3 MILLION
GROSS TURNOVER



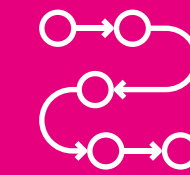
GREENHAUS HAS CREATED
96 AFFORDABLE, SUSTAINABLE
HOMES FOR THE CITY



GROWING
WORKFORCE



104
EMPLOYEES



£1.8 BILLION
DEVELOPMENT
PIPELINE

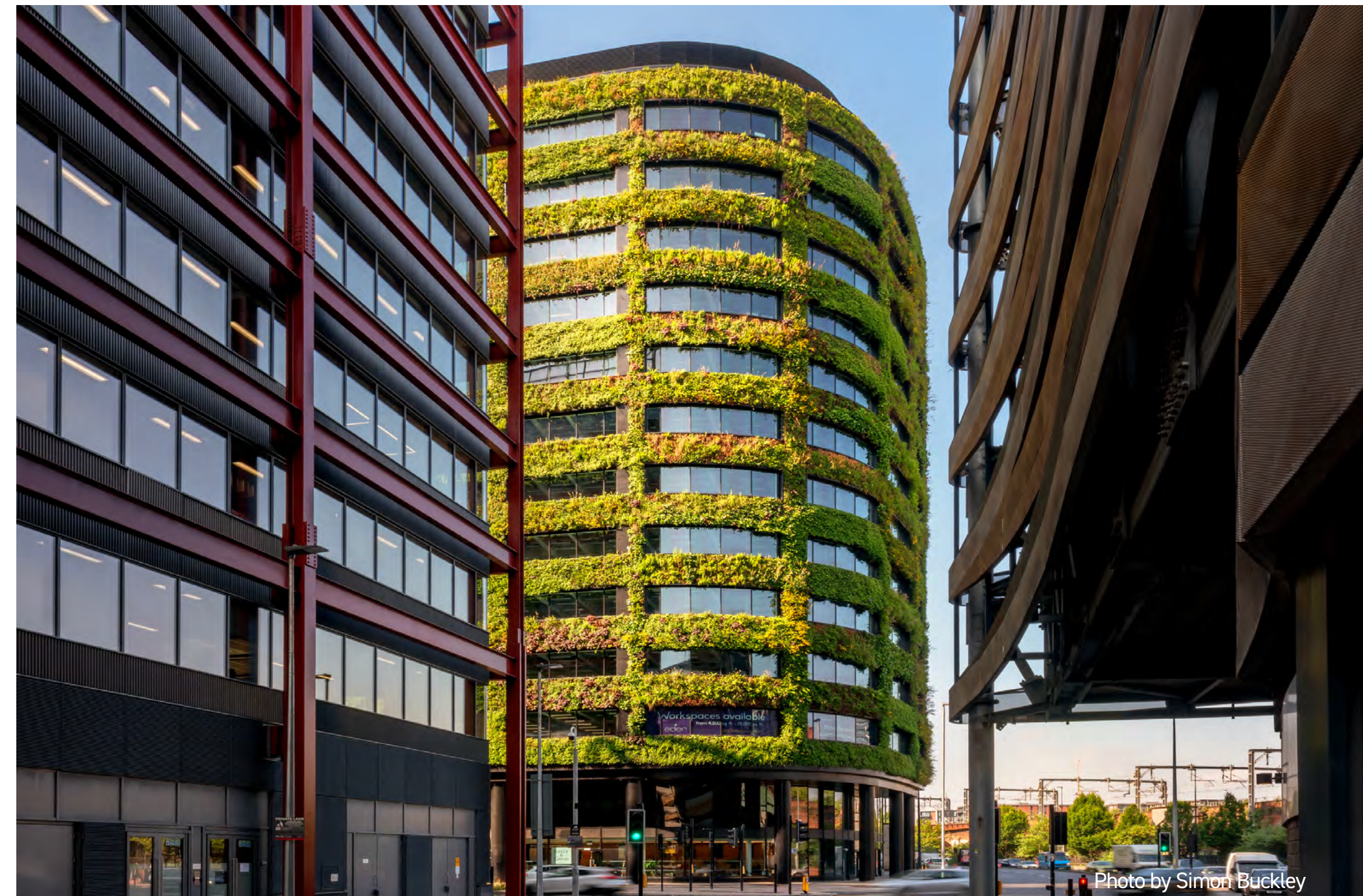


Photo by Simon Buckley

Morgan Sindall

Morgan Sindall Construction is a national main contractor with a £967 million turnover.

Its decentralised structure sees its North West operations managed from a regional business unit in Salford, employing around 160 people and generating £130 million in revenue.

It is part of Morgan Sindall Group plc, a collection of specialist businesses delivering construction and regeneration projects across the UK. The Group, which also includes Salford-based developer Muse, has over 7,000 employees and in 2023 achieved over £4 billion in revenue.

In Salford, Morgan Sindall has been at the heart of the city's regeneration over the past two decades. Key projects include the BUPA Headquarters at MediaCity and several developments at New Bailey for the English Cities Fund, including Slate Yard Phase 3 and Novella. The company maintains a strong industry partnership with the University of Salford, benefiting both employees and students.

Morgan Sindall is also a leader in skills and training within the Salford construction sector, exemplified by their 'Knowledge Quad' initiative. This facility, initially hosted at The University of Salford and now at the C2 development, provides a base within a live construction site for educational engagement and employment courses such as Build Salford, and a wide range of other skills and training activities. Its onsite location offers users a unique insight into a working construction environment.

Anchorage 2, Salford Quays, M50 3YW
[morgansindallconstruction.com](https://www.morgansindallconstruction.com)



GENERATED £130 MILLION IN REVENUE LOCALLY



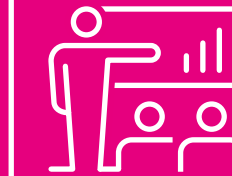
STRONG INDUSTRY PARTNERSHIP WITH UNIVERSITY OF SALFORD



NORTH WEST OPERATIONS UNIT BASED IN SALFORD



THE GROUP HAS 7K+ EMPLOYEES NATIONALLY



SECTOR LEADER IN SKILLS AND TRAINING



CREATIVE & TECHNOLOGY



**SKILLS PIPELINE
DRIVEN BY A RANGE
OF LOCAL INSTITUTIONS**



**INNOVATION ASSETS
INCLUDING IMMERSIVE TECH
AND UNIVERSITY OF SALFORD**



**32,000+
JOBS**



**50% INCREASE
IN BUSINESS
BASE SINCE 2019**



**SECOND LARGEST
CREATIVE INDUSTRIES
SECTOR IN GM**



Since the relocation of the BBC to Salford over a decade ago, Salford has experienced significant growth in its creative and tech sector.

It has developed into Salford's core strength with the city home to a number of large companies that provide rapidly growing employment, increasing by almost 50% since 2019 to over 32,000 jobs.

Overall, there are over 2,000 businesses in the sector based in Salford. Specialist areas include broadcasting and related fields, alongside specialist digital and consultancy activities.

Film, TV, Video, Radio and Photography account for over 50% of the creative industry sector in Salford, forming a specialist creative cluster – especially when compared to Greater Manchester (GM) where it is 16% of the total and the UK, where it is 12%. In total, Salford has the second largest creative industries sector in GM.

A number of industry leading companies are clustered around the BBC at MediaCity and Salford Quays, including ITV and Dock 10, at what is Europe's largest purpose-built digital hub which also features the University of Salford. Moving forward there are opportunities to build on its strengths through innovation.

In immersive tech pioneering work is underway through the MediaCity Immersive Technologies Innovation Hub.

MediaCity itself is also set to expand further with 900,000 sq ft, of additional office space planned to accommodate industries of the future.

**BBC HAS AN
ESTABLISHED PRESENCE
PROVIDING GLOBAL
BRAND AWARENESS**

**STRONG CLUSTER OF
250+ CREATIVE AND
TECH COMPANIES AND
ASSOCIATED TALENT**

In 2011, the BBC opened a base at MediaCity in Salford to better serve audiences in the North of England, as well as benefit the local economy.

The BBC was MediaCity's anchor tenant and a catalyst to the development becoming a world-recognised leading creative, media and digital cluster.

The BBC have continued to re-locate key departments and programmes and today over 3,500 staff work at MediaCity, producing thousands of hours of content for television, radio and online.

Major departments include BBC Sport, BBC Children's and Education, BBC Radio 5 Live, BBC Children in Need, and the BBC Philharmonic Orchestra. Famous programmes include Match of the Day, BBC Breakfast, Blue Peter, You & Yours, Football Focus and A Question of Sport.

The BBC's local and regional services are based in Salford including North West Tonight and Radio Manchester. In 2024, the BBC also relocated The News at One - the BBC's first daily network TV news bulletin to be produced and broadcast from outside London.

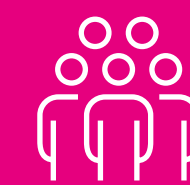
The BBC in Salford is a digital powerhouse; home to some of the BBC's biggest digital products including iPlayer, Bitesize, BBC Sport Online and BBC Children's Online. The BBC's move to Salford has transformed the local economy by driving investment and economic activity that boosts the whole region. A KMPG report published in 2021 found that since the BBC moved to Salford, employment in the creative sector in the city has grown by 142% and the number of creative businesses has grown by 70%.

Quay House, MediaCity, Salford, M50 2QH

bbc.co.uk



OPENED A BASE
AT MEDIACITY
IN 2011



3,500
EMPLOYEES



70% GROWTH IN
NUMBER OF CREATIVE
BUSINESSES



142% GROWTH IN
EMPLOYMENT IN THE
CREATIVE SECTOR



ONE OF THE LARGEST HDTV
PROGRAMME MAKING
FACILITIES IN EUROPE



Apadmi

Born alongside the dawn of the smartphone in 2009.

Apadmi has become one of Europe's fastestgrowing digital product consultancies. Moving to its Salford Headquarters in 2020 has seen the business expand rapidly from just 50 to more than 400 people at the beginning of 2025. Apadmi has created a fierce reputation for designing, developing and optimising digital mobile products for leading brands across the North West, the UK and Europe. The bespoke mobile experiences Apadmi creates unlock new value for clients through strategy, platforms, middleware and systems integrations that transform the way they work.

From customer growth, increased engagement and loyalty, improved self-service and more revenue per customer, Apadmi has helped brands such as Domino's, Asda, Sykes Cottages, iD Mobile and Argos Financial. Apadmi has collaborated with local Salford and Manchester businesses such as the BBC, Co-op, TalkTalk and GigPig, finding value in supporting neighbouring organisations in achieving their mobile ambitions.

Alongside its international expansion, Apadmi remains very active in the Salford community. They offer their purpose-built event space in Anchorage Two to clients and local businesses, and regularly host tech-focussed events in the space to encourage knowledge-sharing, networking and collaboration, including the 'girls in tech' initiative from Salford-based TalkTalk which saw students from a local high school attend workshops to inspire future careers in technology. Apadmi also supports the nurturing of local tech talent through affiliation with Northcoders as well as taking local graduates into the Apadmi Academy graduate scheme.

Apadmi. Experts in everything mobile.

Level 9, Anchorage Two, Salford Quays, M50 3YW

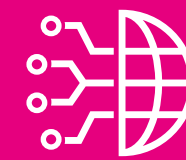
[apadmi.com](https://www.apadmi.com)



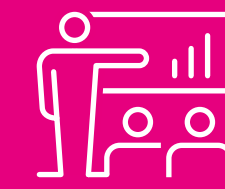
400 + EMPLOYEES ACROSS EUROPE
INCLUDING 280 AT SALFORD QUAYS



FEATURED TWICE IN
SUNDAY TIMES BEST
PLACES TO WORK LIST



ONE OF EUROPE'S
FASTEST
GROWING DIGITAL
CONSULTANCIES



APADMI ACADEMY
SCHEME SUPPORTS
TALENT DEVELOPMENT



36%
REVENUE
INCREASE
IN 2024



HEALTH, SOCIAL CARE & INNOVATION



PROVIDING
26,000+ JOBS



EXTENSIVE HEALTH
AND SOCIAL CARE
EXPERTISE



58% INCREASE
IN EMPLOYMENT
SINCE 2019



'OUTSTANDING'
RATING BY THE CARE
QUALITY COMMISSION



MAJOR EMPLOYER AS PART OF
THE NORTHERN CARE ALLIANCE
NHS FOUNDATION TRUST



Salford is leading the way in health and social care innovation.

In 2016, Salford – as part of Greater Manchester became the first region to be granted devolved control of health and social care spending. Greater Manchester embarked upon the most radical health and care transformation programme in the country, with partnership working delivering better outcomes. The area now has an established model of integrated neighbourhood and place-based working with strong collaborations across secondary, primary, mental health and social care.

Salford City Council and Salford Royal Hospital anchor the sector locally, which together comprises over 400 companies providing over 26,000 jobs. The business base has grown by 9% since 2019, whilst the growth in employment has been impressive, at 58% over the same period. Local strengths and specialisms include childcare, social care and hospital activities, with Salford Royal as the headquarters for the Northern Care Alliance.

Salford Royal Hospital is also a leader in healthcare, winning multiple awards and being rated 'outstanding' by the Care Quality Commission for the second time in 2018. Bupa opened a new office at Salford Quays in 2018, providing a single location for over 2,000 staff, investing significantly in the Bupa Place building.

Salford has established a nationally leading model to connect the health and care system with academic and industry partners in the pursuit, discovery and spread of innovation. The University of Salford has core specialisms in health and is planning a new clinic building to house its School of Health and Society at its Frederick Road Campus as part of the wider future Crescent Masterplan.

**SALFORD CITY COUNCIL
AND SALFORD ROYAL
HOSPITAL ANCHOR
THE SECTOR**

**SINCE 2019,
THE BUSINESS BASE HAS
GROWN BY 9%**

Bupa Global, India & UK

Bupa's purpose is helping people live longer, healthier, happier lives and making a better world.

Health insurance accounts for a large part of our business with Bupa UK Insurance, the UK's leading health insurer, providing health and dental cover to over 3.8 million people.

Bupa Global is the premium health insurance arm of Bupa, serving 360,000 customers around the world. Bupa Dental Care is the leading provider of dentistry in the UK, providing dental services in around 400 centres across the UK and Ireland. Bupa Care Services has around 6,700 residents in over 117 care homes, and 10 Richmond care villages. Bupa Health Services comprises 54 health clinics, and the Cromwell Hospital in London.

Bupa's UK head office has been based in Salford for the last 70 years, and in 2018 they opened Bupa Place in Salford Quays which houses over 3,200 staff. Out of the site, Bupa runs a Contact Centre which supports customers with their health insurance claims, bookings for health services and provides support via their remote healthcare services. As well as the Contact Centre a lot of the key functions work out of the Salford Quays office, such as the marketing teams, digital team and leadership teams for the different business units.

Bupa is passionate about diversity and inclusion and making sure all employees are supported to bring their whole selves to work every day, through their Be You at Bupa commitment and Everyone is Welcome pledge.

102 The Quays, Salford, M50 3SP

careers.bupa.co.uk

	3,200 EMPLOYEES BASED IN SALFORD QUAYS		3.8M+ PEOPLE COVERED IN THE UK		PASSIONATE ABOUT DIVERSITY & INCLUSION
	360,000 CUSTOMERS SERVED BY BUPA GLOBAL AROUND THE WORLD				HEAD OFFICE HAS BEEN BASED IN SALFORD FOR THE LAST 70 YEARS



Salford Royal

Salford Royal is part of the Northern Care Alliance NHS Foundation Trust with approx. 7,000 staff working only at Salford Royal.

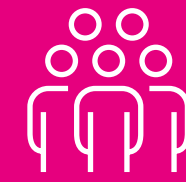
Salford Royal is part of Salford's Innovation Triangle alongside its partners MediaCity and The University of Salford who continue to drive digital innovation to improve delivery of health and social care for residents.

Salford Royal opened the Greater Manchester Major Trauma Hospital (GMMTH) in 2024 which includes a state-of-the-art RAPTOR theatre facility, the first hybrid major trauma theatre in the UK. The GMMTH makes it possible for people who have suffered major trauma to be treated in one place with the right clinicians, technology and equipment. Salford Royal is also home to the Greater Manchester Neurosciences Centre and collaborates with the Geoffrey Jefferson Brain Research Centre who are looking at experimental medicines and new treatments of diseases like Parkinson's, dementia, stroke, brain tumours and inflammation.

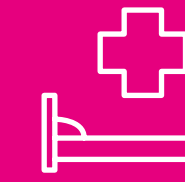
The hospital is also the designated Greater Manchester comprehensive centre for stroke care, a partnership of stroke care providers across the region, providing coordination of services, training, collaborative working and improvement of standards of care throughout the stroke care journey, from acute care through to rehabilitation and life after stroke. Additionally, Salford Royal is currently one of only two National Reference Centres for intestinal failure in the country, treating patients with complicated cases from the UK and from abroad.

Stott Lane, Salford, M6 8HD

northernalliance.nhs.uk



**7,000 STAFF
AT SALFORD
ROYAL**



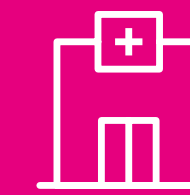
**OVER 300
STAFF WORK
IN THE CCU**



**PART OF SALFORD'S
INNOVATION
TRIANGLE**



**DESIGNATED GREATER
MANCHESTER COMPREHENSIVE
CENTRE FOR STROKE CARE**



**ONE OF TWO NATIONAL
REFERENCE CENTRES
FOR INTESTINAL FAILURE**



THE INDUSTRIAL ECONOMY



**23,000 JOBS
IN THIS
SECTOR**



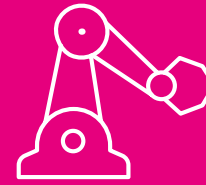
**GROWTH IN LOGISTICS,
WHOLESALE, AND
MANUFACTURING**



**LEADING GM
INDUSTRIAL
LOCATIONS**



**OPPORTUNITY FOR FURTHER
INDUSTRIAL GROWTH**



**SPECIALISMS IN
ACOUSTICS, ROBOTICS
AND ENERGY EFFICIENCY**



Salford has a diverse industrial base comprising almost 2,000 businesses providing 23,000 jobs.

The industrial business base grew by 19% between 2019 and 2023, far outstripping the Greater Manchester (GM) average (2%).

It has specialised and growing sectors in logistics, wholesale and manufacturing including supply into the construction supply chain. Salford's strategic position, running from the heart of the GM City Region, to the west of the city with its connections to the Liverpool City Region, provides us with leading industrial locations such as Northbank Industrial Estate and Agecroft Enterprise Park.

Salford has seen significant innovation in its industrial base in recent years and companies located here can benefit from links with academic partners such as the University of Salford and other GM universities and their specialist innovation assets to test emerging technologies.

Looking forward, with strategic land availability in the west of the city as part of the Greater Manchester Western Gateway, there is room for further industrial growth to accommodate future industrial sectors including advanced manufacturing and materials, logistics, green industries and clean growth sectors.

Salford is also well placed in relation to Industry 4.0 given the high productivity of its business base and assets at the University of Salford, with specialisms in Acoustics, Robotics and Energy efficiency.

**SALFORD'S INDUSTRIAL
BASE COMPRISES OF
2,000 COMPANIES**

**THE INDUSTRIAL
BUSINESS BASE GREW
BY 19% BETWEEN 2019
AND 2023**

Proline Engineering

Founded in 1996, Proline Engineering Ltd supplies bespoke can handling conveying systems primarily to the metal packaging industry and filling industry.

Previously based in Bolton, Proline moved to their 36,000 sq ft Salford facility in 2013 to accommodate an increase in customer demand. There they employ 85 people, mostly in engineering roles.

In 2017 Proline became part of CPM Holdings, a US based group with 40 facilities across 4 continents, and an annual turnover of \$820 million.

Proline supply mechanical, air, vacuum and magnetic conveyors which are designed and built in-house at their Worsley based facility. They offer a comprehensive aftermarket care service with a team of experienced field service engineers who are deployed worldwide for installation, commissioning and maintenance, along with a dedicated spare parts team.

Proline are continuously developing their product portfolio, with a specific focus on sustainability which is demonstrated in the latest designs which minimise energy usage without compromising on line speed or product quality.

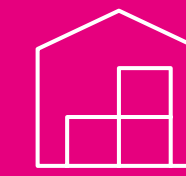
In 2022, Proline merged with Blackburn-based sister company Greenbank Technology. Since the two businesses both predominantly work within the canmaking industry, this has further strengthened the position of Proline and allowed for sharing of resources and personnel.

Wardley Industrial Estate, Worsley, Salford, M28 2QB

onecpm.com



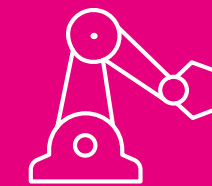
85 STAFF
EMPLOYED



36,000 SQ FT
FACILITY



950KM OF CONVEYING
INSTALLED WORLDWIDE



MACHINERY INSTALLED IN 36
COUNTRIES ACROSS 6 CONTINENTS



6,000 PRODUCTS
INSTALLED WORLDWIDE



Mettler Toledo

METTLER TOLEDO offer precision instruments and services for many applications in research and development, quality control, production, logistics and retail to customers around the world.

They provide measurement solutions across their customers' value chain and are one of the largest global sales and service organisations among precision instrument companies. They design instruments not only to gather valuable data, but also to facilitate the processing, analysis, and transfer of this data into customers' management information systems.

Founded in 1945, the company has more than 17,500 employees in over 100 countries. METTLER TOLEDO is geographically diversified with sales in 2023 derived 41% from the Americas, 32% from Asia/Rest of World, and 27% from Europe. The company has an extensive global sales and service and a strong manufacturing presence in Europe, the United States, and China.

Opening its doors in 1989, the Safeline arm of METTLER TOLEDO manufacture high quality metal detection equipment for the food, pharmaceutical and chemical industries worldwide. The location is home to 290 talented employees and an acclaimed Apprenticeship Programme that looks to nurture potential leaders of the future.

Recently the Salford site has enjoyed significant investment that has not only transformed the working environment but also supported the in-house R&D team with the launch of a new software management system that has helped drive new business.

Montford St, Salford, M50 2XD

[mt.com](https://www.mt.com)



\$1.1 BN OPERATING INCOME (2023)



\$3.9BN REVENUE (2023)



**APPROX. 17,500
EMPLOYEES
WORLDWIDE**



**\$4.5BN TOTAL
ASSETS (2023)**



**\$800M NET
INCOME (2023)**



LOW CARBON & CLEAN GROWTH



**PROVIDING
29,000 JOBS**



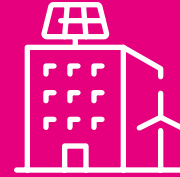
**APPROX. 2,200
BUSINESSES IN
THE SECTOR**



**LEADING INNOVATION
ASSETS SUCH AS
ENERGY HOUSE LABS**



**INNOVATIVE BUSINESS
BASE TO SUPPORT THE
TRANSITION TO NET ZERO**



**LARGEST CLUSTER OF BUILDINGS
VERIFIED AS NET ZERO CARBON
IN OPERATIONS IN THE UK**



As one of the fastest growing local economies in the UK, Salford is an ideal location for specialist low carbon and clean growth firms.

Salford has strengths across all sectors and the business base is the most productive in Greater Manchester, and this is typically linked companies who are proactive in making the transition to net zero.

Salford has strengths in a number of industries related to low carbon and clean growth, including construction and development and logistics, as well as specialist advisory areas such as accounting, insurance and legal services, which are critical to making the transition to net zero. The city is committed to seizing the economic opportunities linked to this agenda and is working towards ambitious targets for the city's decarbonisation, pledging along with the rest of Greater Manchester, to be carbon neutral by 2038 – 12 years ahead of the national target.

This accelerated target has attracted innovative low carbon companies to the city, and alongside the city's home-grown companies, there are now over 2,000 businesses in the sector, providing 29,000 jobs. Leading innovation assets are available across the city, for example at the University of Salford's Energy House Labs, an award-winning energy performance research facility, which includes environmental chambers for the testing of low carbon tech in homes.

The Centre for Thriving Places found that Salford was building the most energy-efficient new homes and preserving and creating more green space than any other council in England and Wales. MediaCity has the largest cluster of buildings verified as Net Zero Carbon in Operation in the UK, whilst the Eden building at New Bailey has Europe's largest living wall.

**SALFORD IS BUILDING
THE MOST ENERGY-
EFFICIENT NEW HOMES
IN ENGLAND AND WALES**

**COMMITTED TO
SUPPORTING THE
SECTOR AND ACHIEVING
NET ZERO BY 2038**

Kenny Waste Management

Kenny Waste Management has put the customer first since 1985.

Starting as a family business in Salford providing local skips to local builders, they have grown to become the North West's leading independent supplier of waste management solutions, employing over 200 people. They are a real-living wage employer and prioritise Salford based businesses during procurement processes.

They offer a complete managed service, covering all waste management needs with a fleet of more than 50 ultra-low-carbon vehicles and purpose-built Materials Recovery Facilities (MRFs) in Greater Manchester, which process more than 180,000 tonnes of waste annually. This includes waste from all sectors, including businesses and residential waste. Over 99% of that waste is diverted away from landfill.

In 2005, Kenny Waste Management expanded to offer a groundbreaking managed service UK-wide, pioneering an accurate waste reporting system that enables the UK's largest housebuilders and construction contractors to make measurable progress on sustainability ambitions and circular economy initiatives.

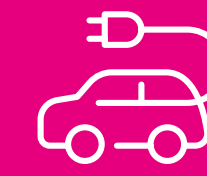
In 2018, inspired to address employment inequalities, Kenny Waste Management launched their own Social Enterprise. Generating social value in our area, its mission is to make career opportunities accessible to all by working collaboratively in communities. Initiatives include providing employment for long-term unemployed individuals, ex-offenders and young people, and offering community support and driving environmental protection.

Lester Rd, Little Hulton, Salford, M38 0PT

kennywastemanagement.co.uk



200+
EMPLOYEES



50+ FLEET OF
ULTRA-LOW-
CARBON VEHICLES



REAL-LIVING
WAGE
EMPLOYER



LAUNCHED THEIR
OWN SOCIAL
ENTERPRISE IN 2018



180K TONNES OF WASTE
PROCESSED IN PURPOSE-BUILT
MATERIALS RECOVERY FACILITIES



YLEM ENERGY

With over 30 years' experience, YLEM is a leading independent power generation specialist, supporting clients in achieving Net Zero targets while contributing to the UK and Greater Manchester's ambitious climate goals and decarbonisation efforts.

YLEM Energy designs, builds, owns and operates advanced generation systems that include Solar PV, battery storage and hydrogen gas generation, ensuring reliable, sustainable energy for clients and reducing their dependency on traditional power imports.

Recent R&D investment has enabled YLEM Energy to expand its offering to onsite generation systems, flexible solutions that enhance grid resilience but also enable energy-intensive companies to take control of their energy consumption, reduce costs and improve their environmental impact.

Root Power, part of the YLEM Group, has entered the battery energy storage market with a pipeline of 2GW. Recently, the specialised Battery Energy Storage System (BESS) offshoot of YLEM Energy appointed five planning consultancies to help prepare planning applications for 40 BESS projects across the UK. This pipeline has meant Root-Power has immediately cemented itself as one of the largest BESS operators in the sector.

Daniel Adamson Road, Salford, M50 1DT

ylemenergy.com



83
EMPLOYEES



600 PROJECTS
FUNDED SINCE
1991



40 BATTERY STORAGE
PROJECTS PIPELINED
ACROSS THE UK



30% AVERAGE SAVINGS ON
CUSTOMER'S ELECTRICITY
BILLS IN THE LAST 10 YEARS



1.1M METRIC TONNES
OF CO2 EQUIVALENT
SAVED FOR CUSTOMERS



THE OFFICE ECONOMY



12K+ JOBS



INVESTMENT IN CYCLING & WALKING INFRASTRUCTURE



UNIVERSITY OF SALFORD AND OTHER UNIVERSITIES ON THE DOORSTEP



LEADING OFFICE DESTINATIONS WITHIN CLOSE PROXIMITY TO SUPPLIERS, MARKETS & CLIENTS



COMPETITIVE MARKET RATES AND CLUSTER OF FINANCIAL & PROFESSIONAL SERVICES



Salford's office economy has transformed in recent years with a range of new office developments coming onto the market.

Salford has benefitted from the expansion of the Greater Manchester (GM) regional centre and now includes substantial Grade A office space at locations including Greengate and New Bailey in particular.

Many large, international companies have been attracted to Salford because of the availability of quality office accommodation as well as price and location.

These locations are situated at the heart of the city and in close proximity to numerous clients and also benefit from excellent transport links including nationally via rail and across GM through the Metrolink network.

The MediaCity office market is also buoyant with a further 900,000 sq. ft of commercial office space planned as part of its future development, whilst the wider Quays also provides multiple office destinations including Exchange Quay.

Salford is home to 1,655 businesses in this sector, providing almost 12,000 jobs. It has specialised and growing sub-sectors across a diverse range of business, professional and financial services including legal, finance and insurance as well as property and real estate.

There are also related specialisms in pension fund management, recruitment, insurance and car hire.

SALFORD IS HOME TO 1,655 BUSINESSES IN THIS SECTOR

SUBSTANTIAL GRADE A OFFICE SPACE AT LOCATIONS INCLUDING GREENGATE AND NEW BAILEY

AJ Bell

AJ Bell, established in 1995, is one of the largest investment platforms in the UK with over 503,000 customers and now employees over 1,400 staff.

The company relocated its headquarters from Manchester to Salford in 2017 taking over nearly 100,000 sq ft with nearly 1300 of its employees based in Exchange Quay.

AJ Bell is committed to developing its internal talent pipeline, which starts at career entry with its award-winning Apprenticeship Academy. Opened by the Mayor of Salford, the Academy saw its largest and most diverse intake of digital degree and investment operations apprentices in 2023 and was recognised as the 'Large Employer of the Year' in the same year at the Northwest Apprenticeship Awards and 'Financial Services Initiative of the Year' in 2024 at the British Training Awards. AJ Bell has also entered into a partnership with University of Salford supporting students completing an Undergraduate Computing Degree. Our ongoing commitment to growing our own talent is demonstrated through a set of talent development programmes; Activate, Accelerate, (which have been rated Ofsted outstanding) and Advance. Taking employees through every step of their leadership career.

AJ Bell have been supporters of the Salford City Council – Digital Everyone campaign, donating over 300 laptops and mobile phones to schools and local charities. Additionally, they launched AJ Bell Futures Foundation in 2023 aiming to support local communities including one of its partner charities Into University, which helps to transform the lives and aspirations of young people.

Exchange Quay, Salford Quays, M5 3EE

ajbell.co.uk



1,400+
STAFF



503,000+
CUSTOMERS



500,000+ CUSTOMERS
USING ITS INVESTMENT
PLATFORM SERVICE



ONE OF THE LARGEST
INVESTMENT
PLATFORMS IN THE UK



RECENTLY REACHED A
RECORDED ASSETS OF ALMOST
£90BN, £218MILLION TURNOVER



BDO LLP is the UK member firm of the BDO international network.

They understand the ambitions and mindset of the businesses we work with and have the global reach, integrity and expertise to help people and businesses succeed.

In the North West, the teams are based across offices in Salford and Liverpool. From the region, the team offers a wide range of specialisms across sectors and deep expertise in all areas of tax, audit and advisory working with clients from mid-market, scale-up and listed businesses to public sector and not-for-profit organisations.

BDO has a commitment to continuing to invest in the North West, having recently moved to Eden in Salford. The firm continues to invest in its people at all levels of the business, including announcing 85 new trainees across its North West UK offices this month, with roles now open for the firm's 2025 intake.

The trainees are a combination of school leaver apprentices, university graduates and students undertaking a 12-month industrial placement. As part of their training programme, the majority of new joiners will also have the opportunity to undertake a Level 7 apprenticeship programme, resulting in a qualification equivalent to a masters degree.

Eden Building, Irwell Street, Salford, M3 5EN

bdo.co.uk



**400 EMPLOYEES
BASED IN SALFORD**



**18 OFFICES
IN THE UK**



**GLOBAL
REVENUES
OF US \$14BN**



**1,776 OFFICES
WORLDWIDE**



**GLOBAL NETWORK PROVIDES BUSINESS
ADVISORY SERVICES IN 166 COUNTRIES**



Photo by Simon Buckley

THE VISITOR ECONOMY



ATTRACTING APPROX. 1M VISITORS



STRONG EVENTS & SPORTING PROFILE



25% INCREASE IN BUSINESS BASE SINCE 2019



17,000 JOBS



1,400 COMPANIES IN THE SECTOR



WATERSIDE SETTING AT MEDIACITY & THE QUAYS



Salford's visitor economy has developed significantly in recent years and is increasingly positioned alongside Manchester at the heart of this sector within Greater Manchester (GM).

In 2022 the economic impact of the visitor economy in Salford was £735 million, stronger than ever and above pre pandemic levels. Salford is home to GM's longstanding most visited attraction - Lowry, consistently attracting approx. 1 million visitors per year with its diverse programme of entertainment and visual art.

The addition of RHS Garden Bridgewater - an attraction of national significance and the most visited paid attraction in GM, has opened up the city to a new visitor market and this will continue to develop and expand in the next few years. The business base has grown by over 25% since 2019 reflecting the momentum generated by these leading attractions. The city's unique waterfront destination of Salford Quays and MediaCity is key to the growth of the visitor economy. Hotels, B&Bs, bars, cafes and restaurants grew by 31% over the past five years, standing out as an important sub sector now contributing over £180 million to the Salford economy.

The city has a considerable sporting reputation with the Salford Community Stadium being home to Super League rugby league team Salford Red Devils and Premiership rugby union side Sale Sharks, whilst Swinton Lions rugby league club and Salford City FC also represent the city. Salford has recent experience and credibility in hosting a number of large-scale events including WeInventedTheWeekend, Sounds From The Other City, the Chinese Dragon Boat Festival, and sporting events such as the Women's Rugby World Cup.

£735 MILLION VISITOR ECONOMY IN 2022

31% INCREASE IN HOTELS, B&BS, BARS, CAFES AND RESTAURANTS IN LAST 5 YEARS

KARGO MKT

Launched in the summer of 2023, Kargo MKT is one of the largest independent food and drink operations in the North of the UK.

It was developed and run by the Blend Family, the operator behind the British Street Food Awards 2022, Cutlery Works in Sheffield and The GPO in Liverpool.

Kargo MKT, Salford's largest food hall is situated in the Quayside shopping centre in MediaCity, housed in the Central Bay complex, once a thriving loading bay during the industrial revolution. The area has undergone a £3.5 million transformation of its waterfront stretch and the 25,000 square foot food hall hosts 19 independent kitchens serving up dishes from across the world as well as hosting events, DJs, live music and providing food and drinks experiences.

Kargo MKT run a Future Food Stars programme to provide a platform for emerging food vendors to build their businesses with mentoring on building and marketing their brand. They also offer family deals and discounts for visitors and locals as well as workspace for students and professionals.

Positioned at the heart of cultural landmarks including Lowry and the Coronation Street studios, Kargo MKT has over 2,000 square feet of south-facing outside terrace space at Central Bay, where up to 600 visitors are able to view some of Manchester's landmarks including Old Trafford football ground. Working with local artists, the Central Bay area's heritage reflects the destination's design with re-imagined shipping containers and branding and artwork reflecting the ethos of supporting local artists and independents.

Unit 32, Quayside Media City, Salford Quays, M50 3AG

kargomkt.com



25,000 SQUARE FOOT FOOD HALL



2,000 SQUARE FEET OF SOUTH-FACING OUTSIDE TERRACE



170 EMPLOYEES



£8.4 MILLION GROSS TURNOVER



CAPACITY FOR 600 GUESTS



RHS Bridgewater

The 154-acre Salford site is the Royal Horticultural Society's fifth public garden and opened to great acclaim in summer 2021.

The Royal Horticultural Society (RHS) transformed the grounds of Worsley New Hall in Salford into the 154-acre RHS Garden Bridgewater, named after the Bridgewater Canal that runs alongside it and opened in 1761. Made possible by £19 million of investment from Salford City Council and custodians Peel L&P, the garden forms part of RHS' ten-year £160 million national investment programme to make the UK a greener place.

The garden is expected to generate £24 million per year for the local economy by 2036 and along with economic benefits for the city, the garden will bring social cohesion, health, and wellbeing to its community, enrich peoples' lives through plants, and make the UK a greener and more beautiful place.

To date, RHS Garden Bridgewater has welcomed over 1.4 million visitors with over 45,000 free tickets issued to Salford residents.

RHS Garden Bridgewater has been designed with the community at its heart. More than 200 volunteers from the local area play a key role in the RHS Bridgewater team and over 7,000 young people from 155 schools across the ten Greater Manchester districts enjoyed free educational visits. In 2023, over £0.5 million of funding has been invested into community green spaces and horticultural projects in Salford, Oldham, Rochdale and Manchester, facilitated by the RHS North West Community Outreach Team. Its community outreach projects engaged with over 4,900 local people, nearly 2,000 of which were young people.

Occupation Rd, Worsley, Salford M28 2LJ

rhs.org.uk/gardens/bridgewater

 100+ EMPLOYEES	 ONE OF THE LARGEST GARDENING PROJECTS IN EUROPE	 EXCELLENT CONNECTIVITY
 EDUCATIONAL VISITS FROM 155 SCHOOLS	 5TH RHS GARDEN	 7.8M PEOPLE LIVE WITHIN AN HOUR






Photo by Mark Waugh

Contact us

For further information on investing in Salford, contact:

Business and Investment Team, Salford City Council

 0161 793 3969

 invest@salford.gov.uk

investsalford.com

For further information about Manchester's inward investment agency, contact:

MIDAS

 info@midas.org.uk

investinmanchester.com

Salford City Council

Invest Salford

 **MIDAS**
investinmanchester.com