

HEALTH, SOCIAL CARE & INNOVATION



PROVIDING
26,000+ JOBS



EXTENSIVE HEALTH
AND SOCIAL CARE
EXPERTISE



58% INCREASE
IN EMPLOYMENT
SINCE 2019



'OUTSTANDING'
RATING BY THE CARE
QUALITY COMMISSION



MAJOR EMPLOYER AS PART OF
THE NORTHERN CARE ALLIANCE
NHS FOUNDATION TRUST



Salford is leading the way in health and social care innovation.

In 2016, Salford – as part of Greater Manchester became the first region to be granted devolved control of health and social care spending. Greater Manchester embarked upon the most radical health and care transformation programme in the country, with partnership working delivering better outcomes. The area now has an established model of integrated neighbourhood and place-based working with strong collaborations across secondary, primary, mental health and social care.

Salford City Council and Salford Royal Hospital anchor the sector locally, which together comprises over 400 companies providing over 26,000 jobs. The business base has grown by 9% since 2019, whilst the growth in employment has been impressive, at 58% over the same period. Local strengths and specialisms include childcare, social care and hospital activities, with Salford Royal as the headquarters for the Northern Care Alliance.

Salford Royal Hospital is also a leader in healthcare, winning multiple awards and being rated 'outstanding' by the Care Quality Commission for the second time in 2018. Bupa opened a new office at Salford Quays in 2018, providing a single location for over 2,000 staff, investing significantly in the Bupa Place building.

Salford has established a nationally leading model to connect the health and care system with academic and industry partners in the pursuit, discovery and spread of innovation. The University of Salford has core specialisms in health and is planning a new clinic building to house its School of Health and Society at its Frederick Road Campus as part of the wider future Crescent Masterplan.

**SALFORD CITY COUNCIL
AND SALFORD ROYAL
HOSPITAL ANCHOR
THE SECTOR**

**SINCE 2019,
THE BUSINESS BASE HAS
GROWN BY 9%**

Bupa Global, India & UK

Bupa's purpose is helping people live longer, healthier, happier lives and making a better world.

Health insurance accounts for a large part of our business with Bupa UK Insurance, the UK's leading health insurer, providing health and dental cover to over 3.8 million people.

Bupa Global is the premium health insurance arm of Bupa, serving 360,000 customers around the world. Bupa Dental Care is the leading provider of dentistry in the UK, providing dental services in around 400 centres across the UK and Ireland. Bupa Care Services has around 6,700 residents in over 117 care homes, and 10 Richmond care villages. Bupa Health Services comprises 54 health clinics, and the Cromwell Hospital in London.

Bupa's UK head office has been based in Salford for the last 70 years, and in 2018 they opened Bupa Place in Salford Quays which houses over 3,200 staff. Out of the site, Bupa runs a Contact Centre which supports customers with their health insurance claims, bookings for health services and provides support via their remote healthcare services. As well as the Contact Centre a lot of the key functions work out of the Salford Quays office, such as the marketing teams, digital team and leadership teams for the different business units.

Bupa is passionate about diversity and inclusion and making sure all employees are supported to bring their whole selves to work every day, through their Be You at Bupa commitment and Everyone is Welcome pledge.

102 The Quays, Salford, M50 3SP

careers.bupa.co.uk

	3,200 EMPLOYEES BASED IN SALFORD QUAYS		3.8M+ PEOPLE COVERED IN THE UK		PASSIONATE ABOUT DIVERSITY & INCLUSION
	360,000 CUSTOMERS SERVED BY BUPA GLOBAL AROUND THE WORLD				HEAD OFFICE HAS BEEN BASED IN SALFORD FOR THE LAST 70 YEARS



Salford Royal

Salford Royal is part of the Northern Care Alliance NHS Foundation Trust with approx. 7,000 staff working only at Salford Royal.

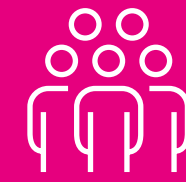
Salford Royal is part of Salford's Innovation Triangle alongside its partners MediaCity and The University of Salford who continue to drive digital innovation to improve delivery of health and social care for residents.

Salford Royal opened the Greater Manchester Major Trauma Hospital (GMMTH) in 2024 which includes a state-of-the-art RAPTOR theatre facility, the first hybrid major trauma theatre in the UK. The GMMTH makes it possible for people who have suffered major trauma to be treated in one place with the right clinicians, technology and equipment. Salford Royal is also home to the Greater Manchester Neurosciences Centre and collaborates with the Geoffrey Jefferson Brain Research Centre who are looking at experimental medicines and new treatments of diseases like Parkinson's, dementia, stroke, brain tumours and inflammation.

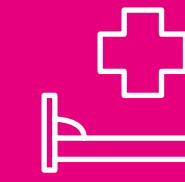
The hospital is also the designated Greater Manchester comprehensive centre for stroke care, a partnership of stroke care providers across the region, providing coordination of services, training, collaborative working and improvement of standards of care throughout the stroke care journey, from acute care through to rehabilitation and life after stroke. Additionally, Salford Royal is currently one of only two National Reference Centres for intestinal failure in the country, treating patients with complicated cases from the UK and from abroad.

Stott Lane, Salford, M6 8HD

northernalliance.nhs.uk



**7,000 STAFF
AT SALFORD
ROYAL**



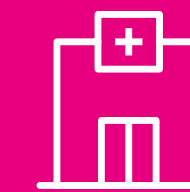
**OVER 300
STAFF WORK
IN THE CCU**



**PART OF SALFORD'S
INNOVATION
TRIANGLE**



**DESIGNATED GREATER
MANCHESTER COMPREHENSIVE
CENTRE FOR STROKE CARE**



**ONE OF TWO NATIONAL
REFERENCE CENTRES
FOR INTESTINAL FAILURE**






Photo by Mark Waugh

Contact us

For further information on investing in Salford, contact:

Business and Investment Team, Salford City Council

 0161 793 3969

 invest@salford.gov.uk

investsalford.com

For further information about Manchester's inward investment agency, contact:

MIDAS

 info@midas.org.uk

investinmanchester.com

Salford City Council

Invest Salford

 **MIDAS**
investinmanchester.com